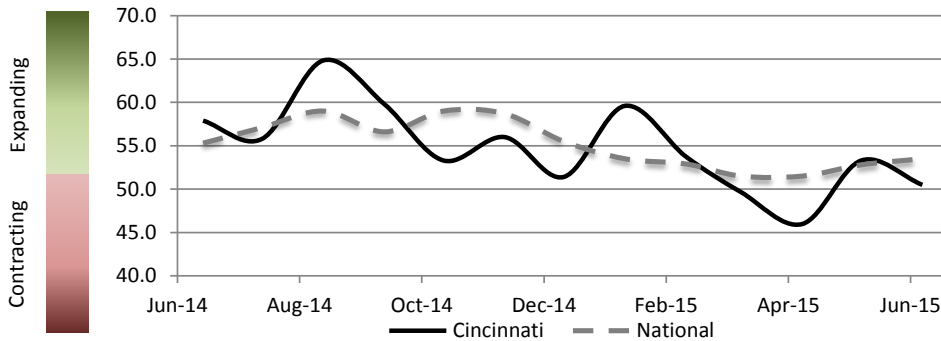


## Report on Business, June 2015

Cincinnati



PMI At A Glance		
Period	Cincinnati	National
Jun-15	50.5	53.5
May-15	53.3	52.8
Apr-15	46.0	51.5
Mar-15	49.7	51.5
Feb-15	53.8	52.9
Jan-15	59.6	53.5
Jun-14	57.9	55.3

In June 2015, the National PMI continued to grow to 53.5 from 52.8 in May. The Cincinnati PMI dropped from 53.3 in May to 50.5 in June. New Orders expanded from 56.6 in May to 65.5, exceeding the National rate. Cincinnati's level of New Exports, Imports, Backlog, and Commodity prices are expected to expand in June and these non-core PMI components are all exceeding respective National non-core PMI amounts.

	Jan	Feb	Mar	April	May	Jun	
<b>New Orders (Core PMI Component) (Seasonally Adjusted)</b>							
Cincinnati	61.8	61.4	54.0	40.3	56.6	65.5	Expanding
National	52.9	52.5	51.8	53.5	55.8	56.0	Expanding
<b>Production (Core PMI Component) (Seasonally Adjusted)</b>							
Cincinnati	56.2	58.0	55.0	45.1	54.8	50.6	Contracting
National	56.5	53.7	53.8	56.0	54.5	54.0	Expanding
<b>Employment (Core PMI Component) (Seasonally Adjusted)</b>							
Cincinnati	68.7	49.4	61.3	51.6	65.2	63.4	Expanding
National	54.1	51.4	50.0	48.3	51.7	55.5	Expanding
<b>Supplier Deliveries (Core PMI Component) (Seasonally Adjusted)</b>							
Cincinnati	57.2	39.9	40.5	42.9	58.0	41.1	Contracting
National	52.9	54.3	50.5	50.1	50.7	48.8	Expanding
<b>Inventory (Core PMI Component)</b>							
Cincinnati	54.2	60.0	37.5	50.0	33.4	31.9	Contracting
National	51.0	52.5	51.5	49.5	51.5	53.0	Expanding

	Jan	Feb	Mar	April	May	Jun	
<b>Perceived Customer Inventory Levels</b>							
Cincinnati	37.5	45.0	54.2	50.0	41.7	36.4	Contracting
National	42.5	46.5	45.5	44.0	45.5	48.5	Expanding
<b>Backlog</b>							
Cincinnati	50.0	62.5	45.0	58.3	50.0	61.1	Expanding
National	46.0	51.5	49.5	49.5	53.5	47.0	Contracting
<b>New Exports</b>							
Cincinnati	62.5	66.7	50.0	66.7	60.0	57.1	Expanding
National	49.5	48.5	47.5	51.5	50.0	49.5	Expanding
<b>Imports</b>							
Cincinnati	68.8	56.2	38.9	58.3	60.0	56.3	Expanding
National	55.5	54.0	52.5	54.0	55.0	53.5	Expanding
<b>Commodity Prices</b>							
Cincinnati	45.5	61.1	37.5	50.0	41.7	59.2	Expanding
National	35.0	35.0	39.0	40.5	49.5	49.5	Contracting

Financial Sponsorship Provided By:



In Affiliation With:



### CONTACT INFORMATION

Michael Jones, Ph.D.  
Director of Research  
m.jones@uc.edu  
513.556.2491

Christopher Nicak  
Research Associate  
Christopher.Nicak@uc.edu  
513-556-9053