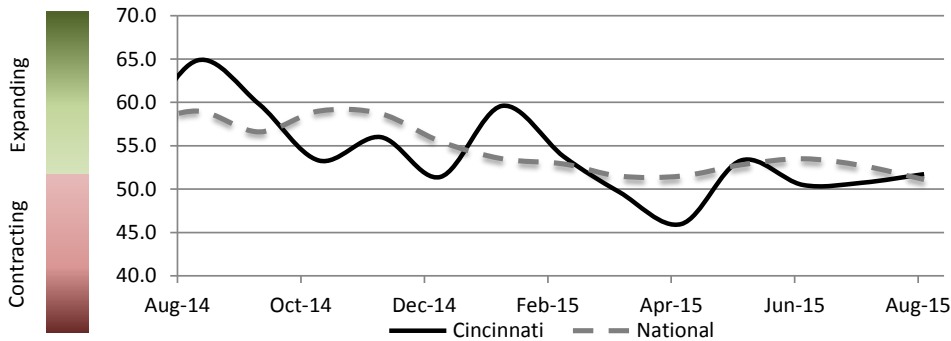


## Report on Business, August 2015

Cincinnati



PMI At A Glance		
Period	Cincinnati	National
Aug-15	51.7	51.1
Jul-15	50.7	52.7
Jun-15	50.5	53.5
May-15	53.3	52.8
Apr-15	46.0	51.5
Mar-15	49.7	51.5
Aug-14	64.8	59.0

August 2015 marked the third consecutive month of Cincinnati's PMI growth whereas it was the third month of national decline. While Cincinnati New Orders, Production, and Imports are all expanding, Commodity Prices and Inventory are down to 33.4 and 38.9 respectively.

Cincinnati and National PMI numbers are substantially lower than a year ago, down 13.1 points in Cincinnati and 7.9 points nationally.

	Mar	April	May	Jun	Jul	Aug	
<b>New Orders (Core PMI Component) (Seasonally Adjusted)</b>							
Cincinnati	54.0	40.3	56.6	65.5	53.8	56.8	Green, Red, Green, Green, Green, Green
National	51.8	53.5	55.8	56.0	56.5	51.7	Green, Green, Green, Green, Green, Green
<b>Production (Core PMI Component) (Seasonally Adjusted)</b>							
Cincinnati	55.0	45.1	54.8	50.6	52.4	62.4	Green, Red, Green, Green, Green, Green
National	53.8	56.0	54.5	54.0	56.0	53.6	Green, Green, Green, Green, Green, Green
<b>Employment (Core PMI Component) (Seasonally Adjusted)</b>							
Cincinnati	61.3	51.6	65.2	63.4	49.3	50.4	Green, Green, Green, Green, Green, Green
National	50.0	48.3	51.7	55.5	52.7	51.2	Green, Green, Green, Green, Green, Green
<b>Supplier Deliveries (Core PMI Component) (Seasonally Adjusted)</b>							
Cincinnati	40.5	42.9	58.0	41.1	73.3	50.2	Red, Red, Green, Red, Green, Green
National	50.5	50.1	50.7	48.8	48.9	50.7	Green, Green, Green, Green, Green, Green
<b>Inventory (Core PMI Component)</b>							
Cincinnati	37.5	50.0	33.4	31.9	25.0	38.9	Red, Red, Red, Red, Red, Red
National	51.5	49.5	51.5	53.0	49.5	48.5	Green, Green, Green, Green, Green, Green

	Mar	April	May	Jun	Jul	Aug	
<b>Perceived Customer Inventory Levels</b>							
Cincinnati	54.2	50.0	41.7	36.4	25.0	50.0	Green, Red, Red, Red, Red, Red
National	45.5	44.0	45.5	48.5	44.0	53.0	Red, Red, Red, Red, Red, Red
<b>Backlog</b>							
Cincinnati	45.0	58.3	50.0	61.1	50.0	57.1	Red, Green, Green, Green, Green, Green
National	49.5	49.5	53.5	47.0	42.5	46.5	Red, Red, Red, Red, Red, Red
<b>New Exports</b>							
Cincinnati	50.0	66.7	60.0	57.1	0.0	50.0	Green, Green, Green, Green, Red, Red
National	47.5	51.5	50.0	49.5	48.0	46.5	Red, Red, Red, Red, Red, Red
<b>Imports</b>							
Cincinnati	38.9	58.3	60.0	56.3	100.0	64.3	Red, Green, Green, Green, Green, Green
National	52.5	54.0	55.0	53.5	52.0	51.5	Green, Green, Green, Green, Green, Green
<b>Commodity Prices</b>							
Cincinnati	37.5	50.0	41.7	59.2	25.0	33.4	Red, Red, Green, Red, Red, Red
National	39.0	40.5	49.5	49.5	44.0	39.0	Red, Red, Red, Red, Red, Red

Financial Sponsorship Provided By:



In Affiliation With:



### CONTACT INFORMATION

Michael Jones, Ph.D.  
Director of Research  
m.jones@uc.edu  
513.556.2491

Christopher Nicak  
Research Associate  
Christopher.Nicak@uc.edu  
513-556-9053