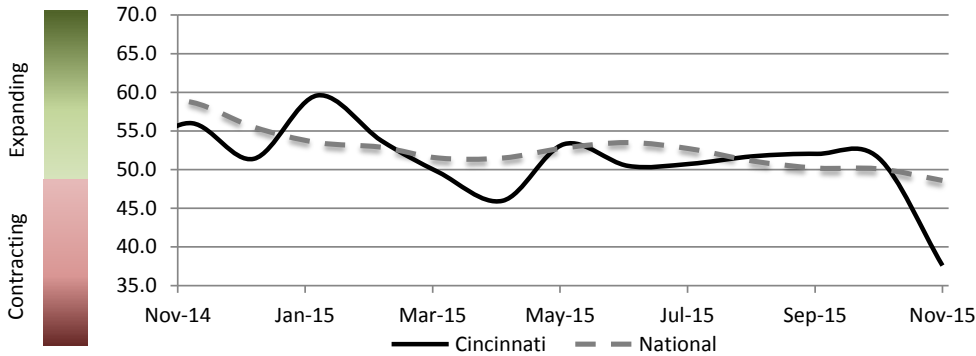


Report on Business, November 2015

Cincinnati



PMI At A Glance		
Period	Cincinnati	National
Nov-15	37.6	48.6
Oct-15	51.5	50.1
Sep-15	52.0	51.1
Aug-15	51.7	52.7
Jul-15	50.7	53.5
Jun-15	50.5	52.8
Nov-14	56.0	58.7

National and Cincinnati regions both report contractions in PMI for November, the second month in a row. However, Cincinnati's contraction is greater than any variation within the past six months and may reflect limited foreign investment as a result of a strong dollar. National and Cincinnati Core PMI Components are either stagnant or down across the board. Lastly, the national manufacturing sector reported its first decline in 36 months.

	Jun	Jul	Aug	Sep	Oct	Nov
New Orders (Core PMI Component) (Seasonally Adjusted)						
Cincinnati	65.5	53.8	56.8	57.3	72.0	25.2
National	56.0	56.5	51.7	50.1	52.9	48.9
Production (Core PMI Component) (Seasonally Adjusted)						
Cincinnati	50.6	52.4	62.4	74.1	64.8	33.8
National	54.0	56.0	53.6	51.8	52.9	49.2
Employment (Core PMI Component) (Seasonally Adjusted)						
Cincinnati	63.4	49.3	50.4	50.9	44.8	51.2
National	55.5	52.7	51.2	50.5	47.6	51.3
Supplier Deliveries (Core PMI Component) (Seasonally Adjusted)						
Cincinnati	41.1	73.3	50.2	44.5	38.6	52.7
National	48.8	48.9	50.7	50.2	50.4	50.6
Inventory (Core PMI Component)						
Cincinnati	31.9	25.0	38.9	33.3	37.5	25.0
National	53.0	49.5	48.5	48.5	46.5	43.0

	Jun	Jul	Aug	Sep	Oct	Nov
Perceived Customer Inventory Levels						
Cincinnati	36.4	25.0	50.0	44.4	43.8	41.7
National	48.5	44.0	53.0	54.5	51.0	50.5
Backlog						
Cincinnati	61.1	50.0	57.1	64.3	75.0	25.0
National	47.0	42.5	46.5	51.5	42.5	43.0
New Exports						
Cincinnati	57.1	0.0	50.0	80.0	66.7	50.0
National	49.5	48.0	46.5	46.6	47.5	47.5
Imports						
Cincinnati	56.3	100.0	64.3	57.1	58.3	33.3
National	53.5	52.0	51.5	50.5	47.0	49.0
Commodity Prices						
Cincinnati	59.2	25.0	33.4	33.3	43.8	33.3
National	49.5	44.0	39.0	38.0	39.0	35.5

Financial Sponsorship Provided By:



In Affiliation With:



CONTACT INFORMATION

Christopher Nicak
Senior Research Associate
Christopher.Nicak@uc.edu
513-556-9053